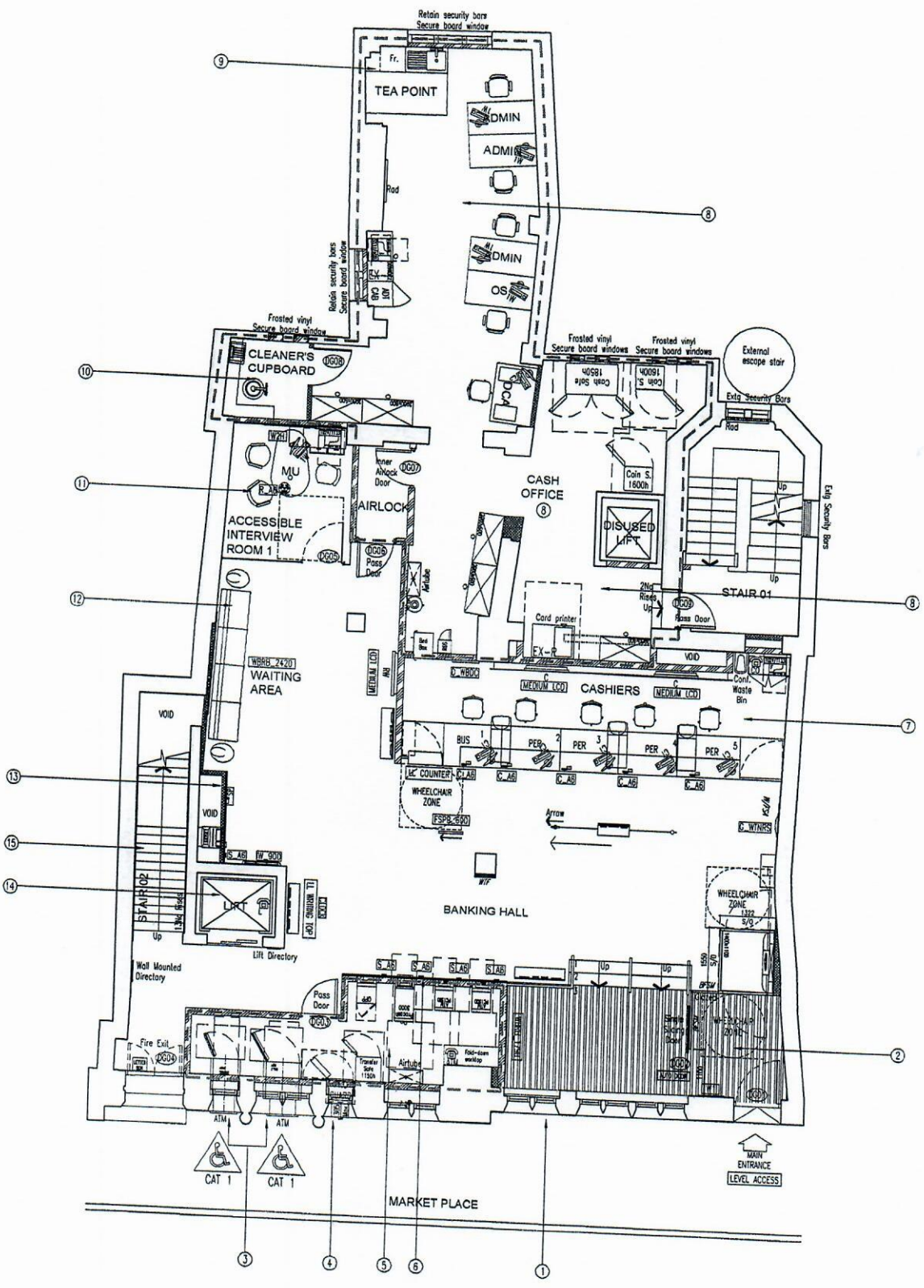
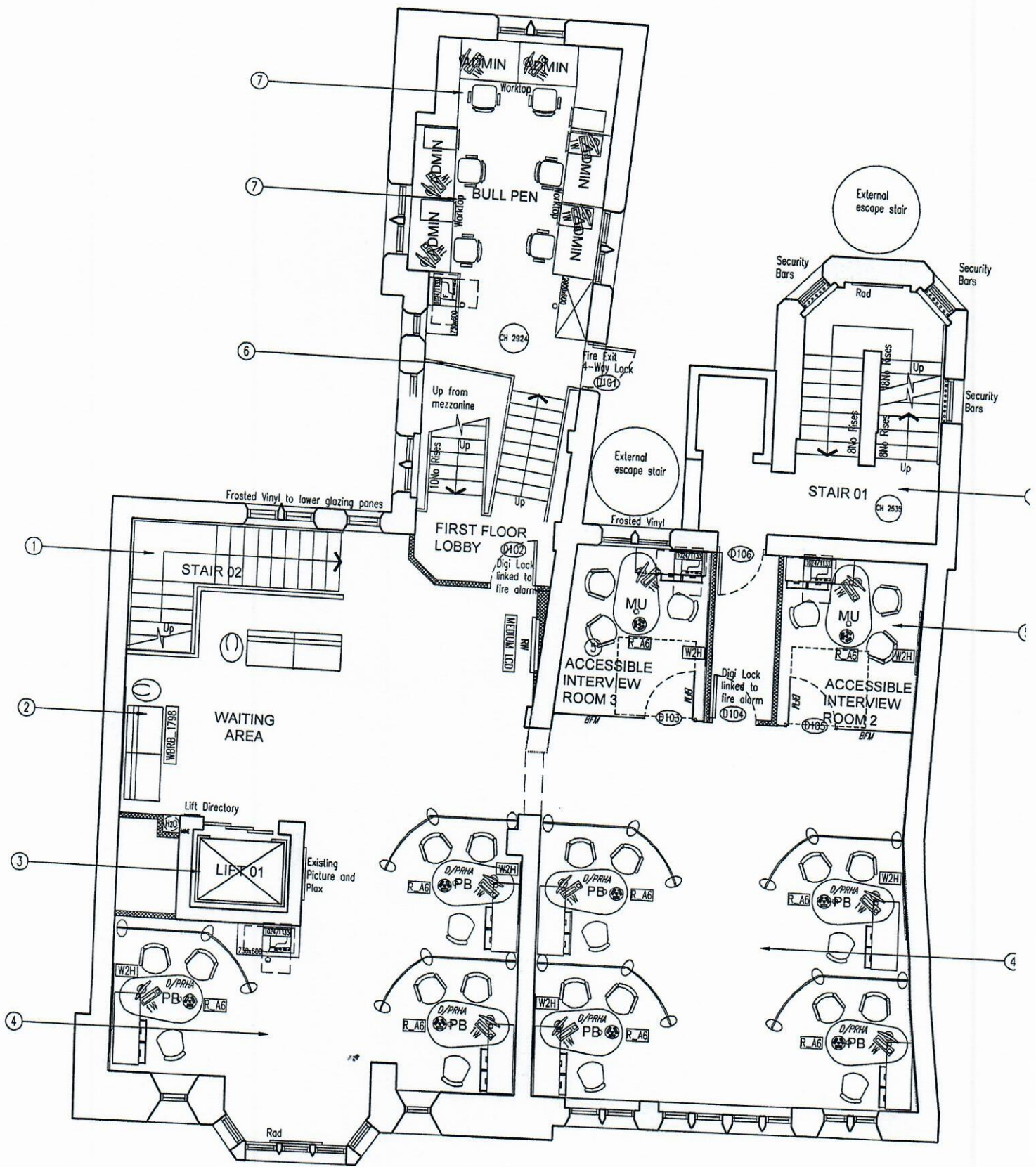


KEY			
DESK OCCUPANCY			
BM	= Branch Manager	ABM	= Ass
CM	= Cash Manager	PCD	= POC
REC	= Reception	PB	= Pers
LBM 3/4/5	= Local Business	PREM	= Prem
BFP	= Barclays Financial Planner	BHF	= Barc
SBO	= Student Banking Officer	MU	= Multi
COMMUNICATIONS OCCUPANCY			
Desktop Phone			
SP	= Service Phone	L	= Lift
CMB	= Call My Branch	S	= Spid
CO	= Coordinator		
Desktop PC			
TW	= One World	AF	= Adv
T	= Training		



Galileo

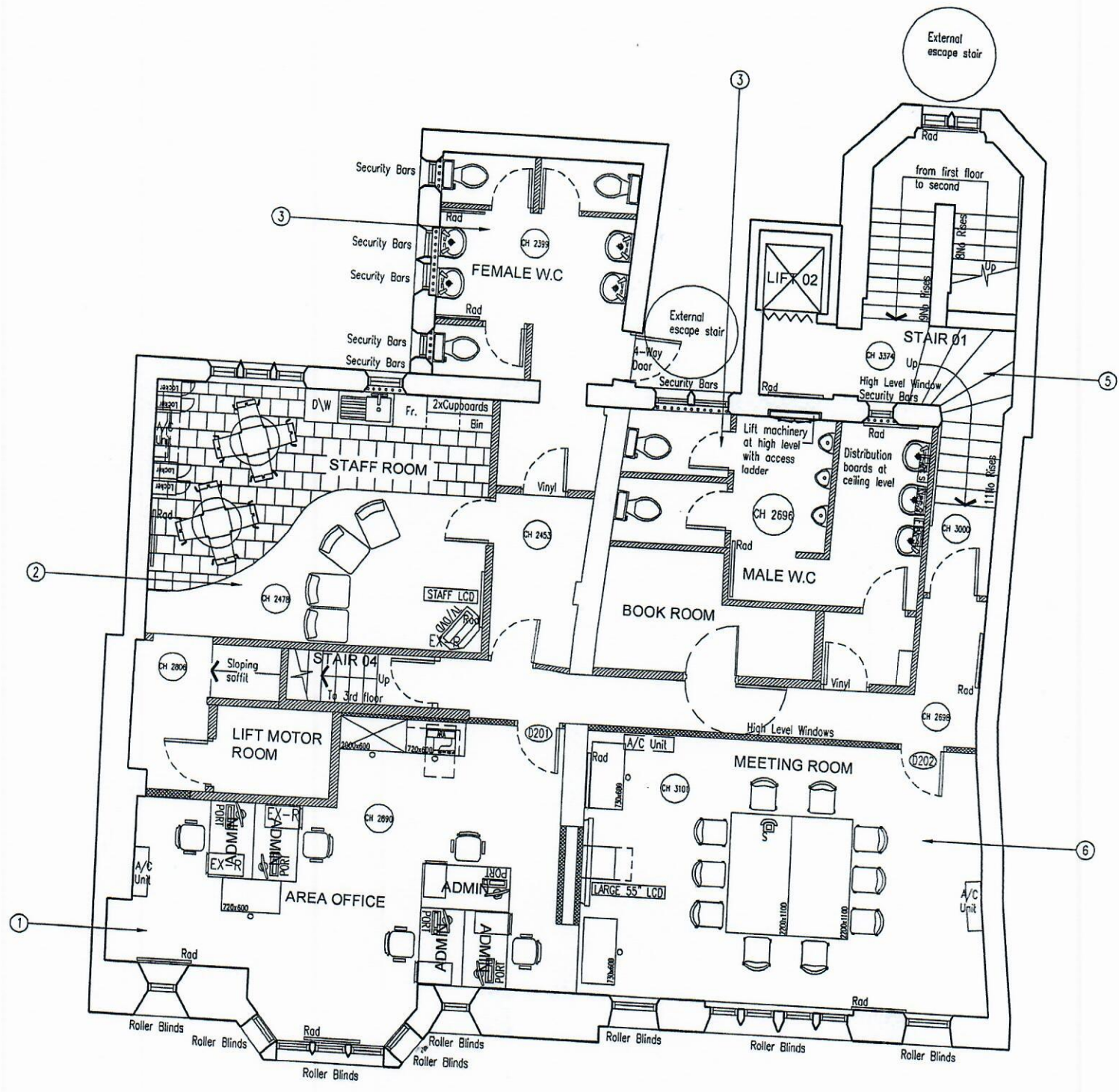
CONSTRUCTION ISSU



10m

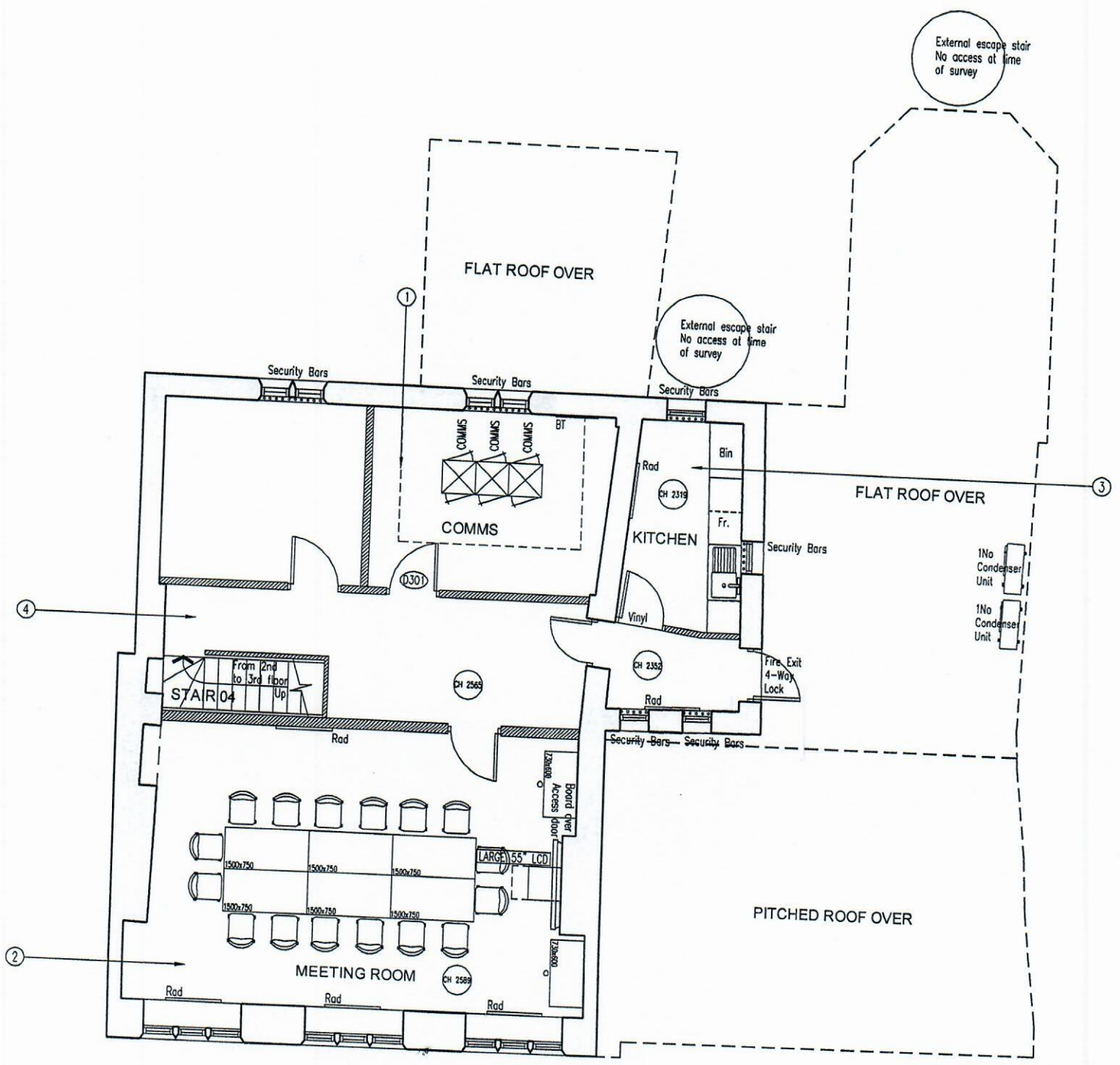
1st floor

CONSTRUCTION ISSUE



10m
2nd floor

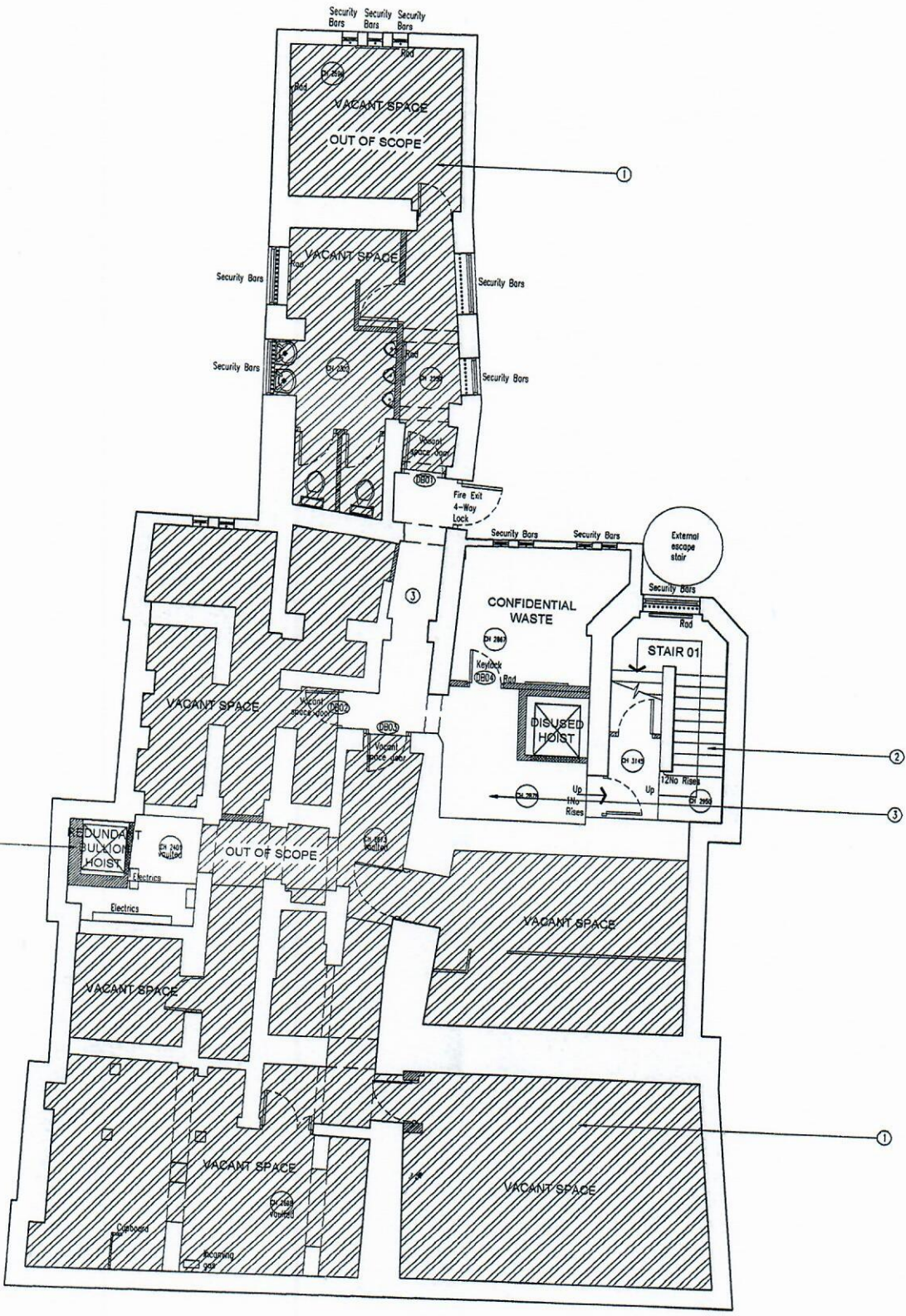
CONSTRUCTION ISSUE



10m
3rd floor

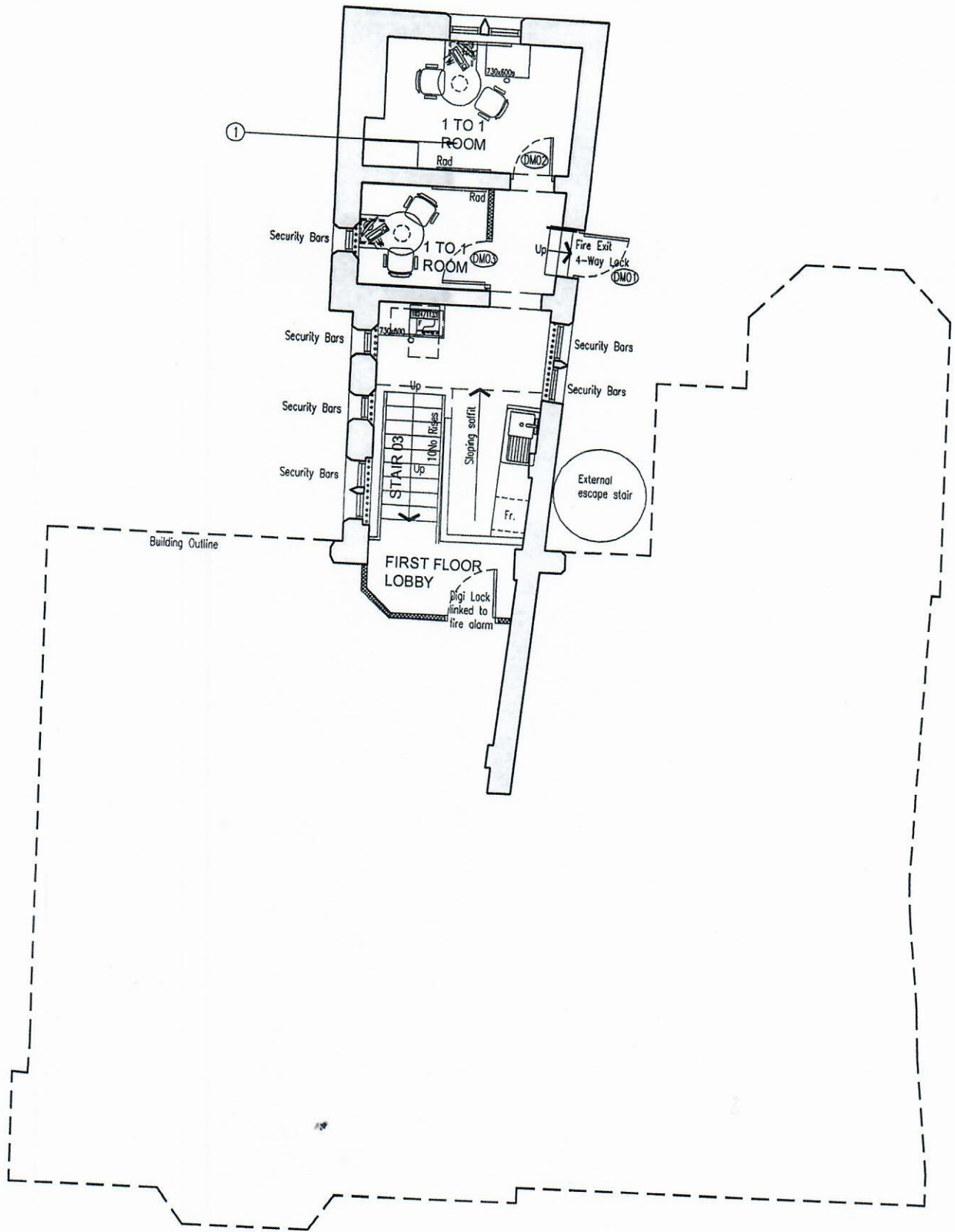
CONSTRUCTION ISSUE

KEY			
DESK OCCUPANCY			
BM	= Branch Manager	ABM	*
CM	= Cash Manager	PCD	*
REC	= Reception	PB	*
LBM 3/4/5	= Local Business	PREM	*
BFP	= Barclays Financial Planner	BHF	*
SBO	= Student Banking Officer	MU	*
COMMUNICATIONS OCCUPANCY			
Desktop Phone			
SP	= Service Phone	L	*
CMB	= Call My Branch	S	*
CO	= Coordinator		
Desktop PC			
TW	= One World	AF	*
T	= Training		



Brent.

CONSTRUCTION ISS



10m

Mezz

CONSTRUCTION ISSUE